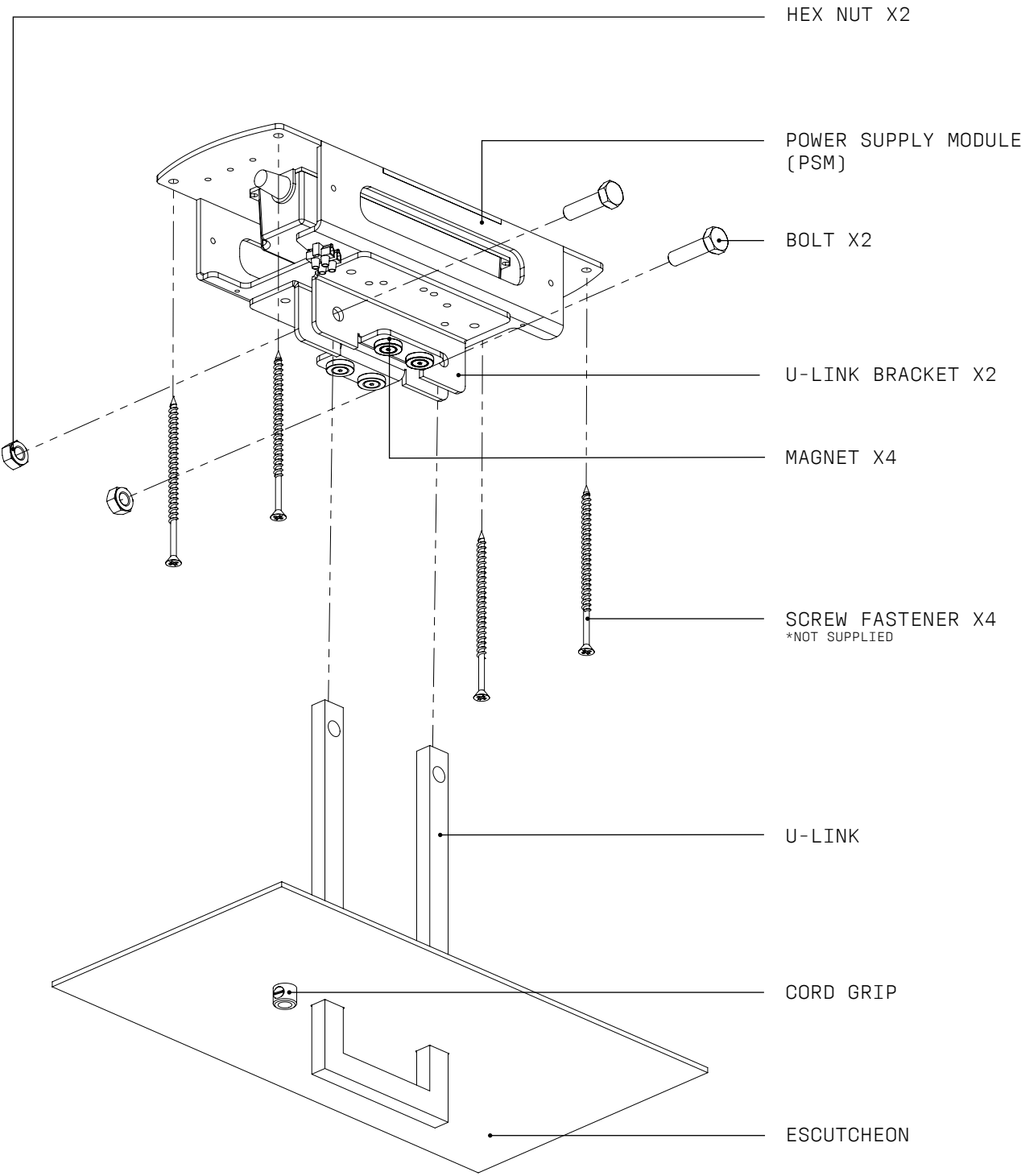


# CHAIN FLUSH LARGE CANOPY





## **WARNING: SHOCK HAZARD**

May result in serious injury or death.  
ENSURE POWER IS OFF before commencing any work.



## **WARNING: ELECTRICAL**

ALL ELECTRICAL connections must be made by a qualified electrician in accordance with the regulations and codes governing the area for which the CHRISTOPHER BOOTS Fixture is intended to be installed in. Failure to do so may result in serious harm or damage to property and life, at the owner's liability and expense.

CHRISTOPHER BOOTS will not be held liable for any damage caused from installation.



## **WARNING: STRUCTURAL**

Ensure that the substrate is securely installed and is in accordance with local building regulations. Failure to do so may potentially result in serious harm or damage of property, at the owner's liability and expense.

CHRISTOPHER BOOTS will not be held liable for any damage caused from installation.



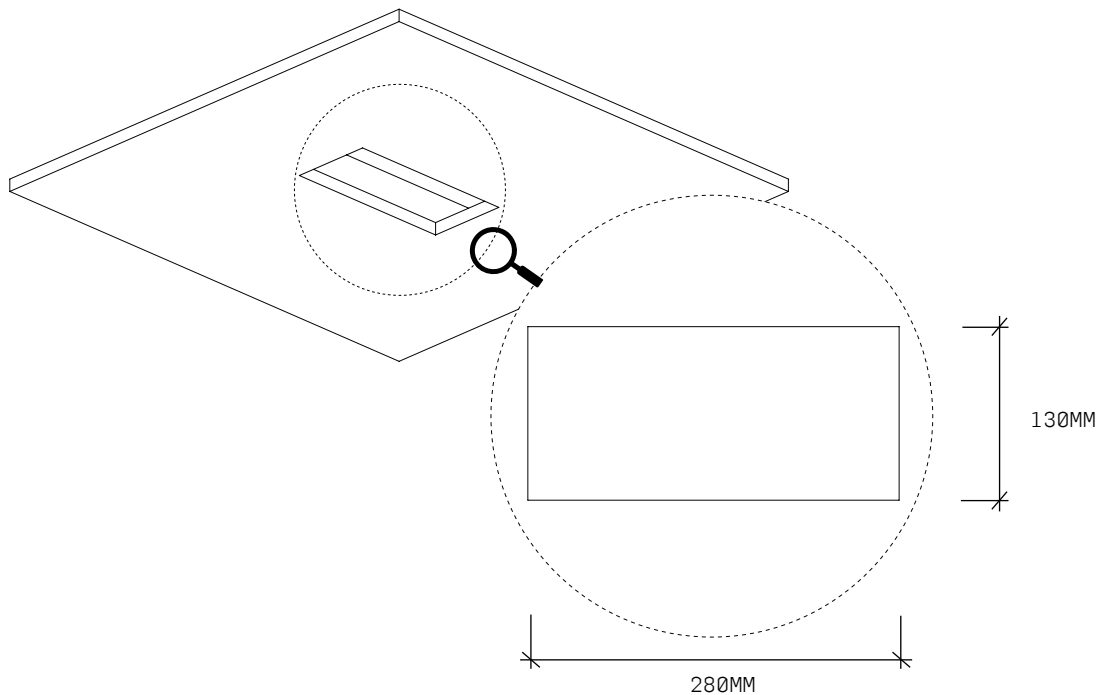
Refer to supplied WIRING DIAGRAM.

- 1 Wearing gloves, unpack all the components for the FLUSH LARGE CANOPY with care, ensuring not to scratch the surface of the ESCUTCHEON or the U-LINK.

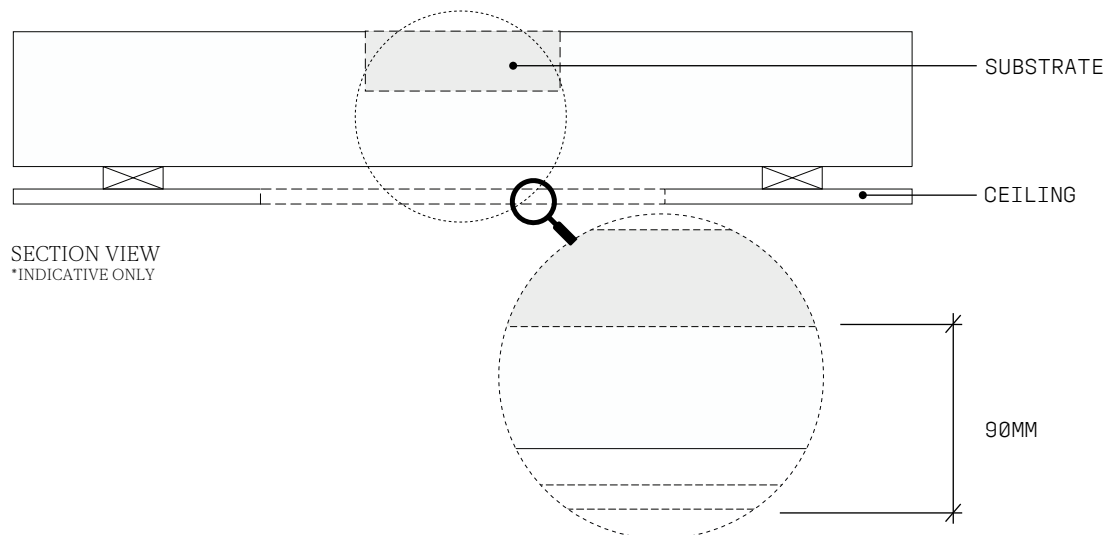


DO NOT REMOVE THE SCRATCH GUARD BEFORE COMPLETION.

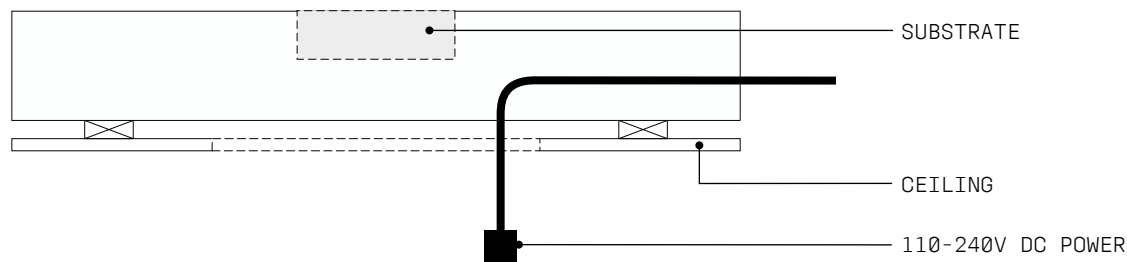
- 2 Prepare the ceiling by cutting an opening in the ceiling for the PSM. Refer to illustration below for dimensions.



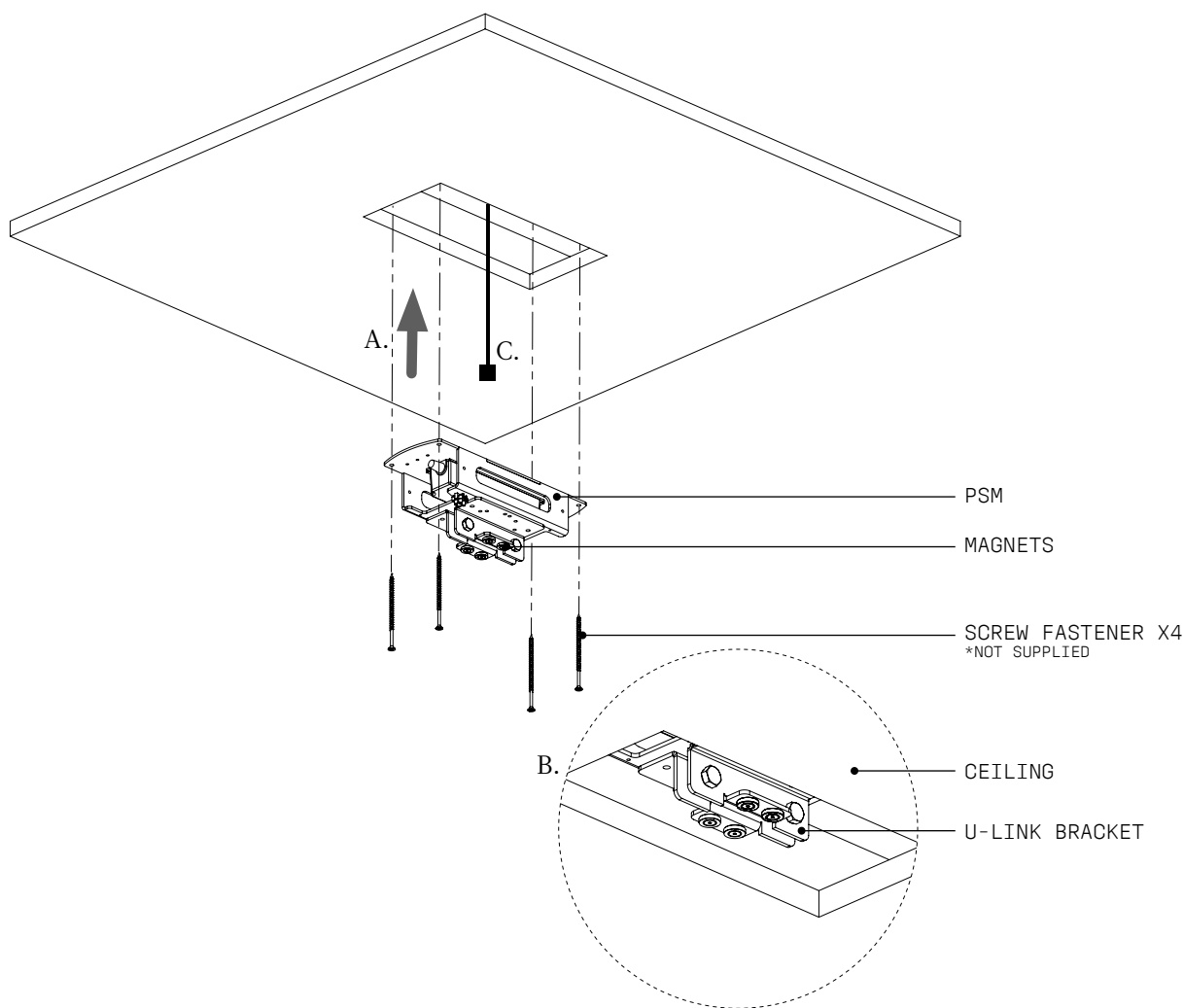
- 3 Installer to provide adequate load-bearing substrate, utilising ceiling joists where additional support is required. The mounting face of the substrate must be set back 90mm from the ceiling. For accurate placement of Cable Exits in the Substrate, use the PSM as a guide.



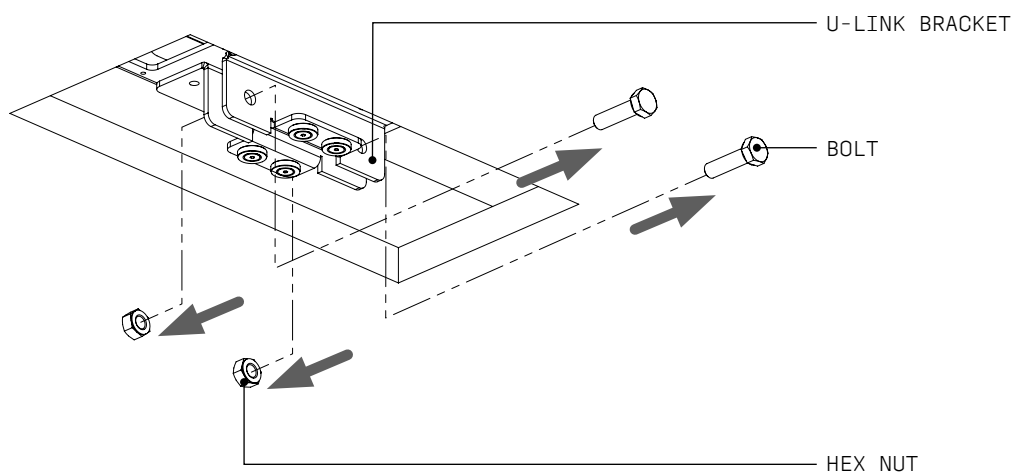
- 4 Prepare the 110-240V AC Power to be connected to the PSM.



- 5 A. Attach the PSM to Substrate with appropriate Fasteners.  
B. Ensure the MAGNETS are flush with the CEILING.  
C. Connect the 110-240V AC Power to the PSM TERMINATION POINT.  
Refer to supplied WIRING DIAGRAM



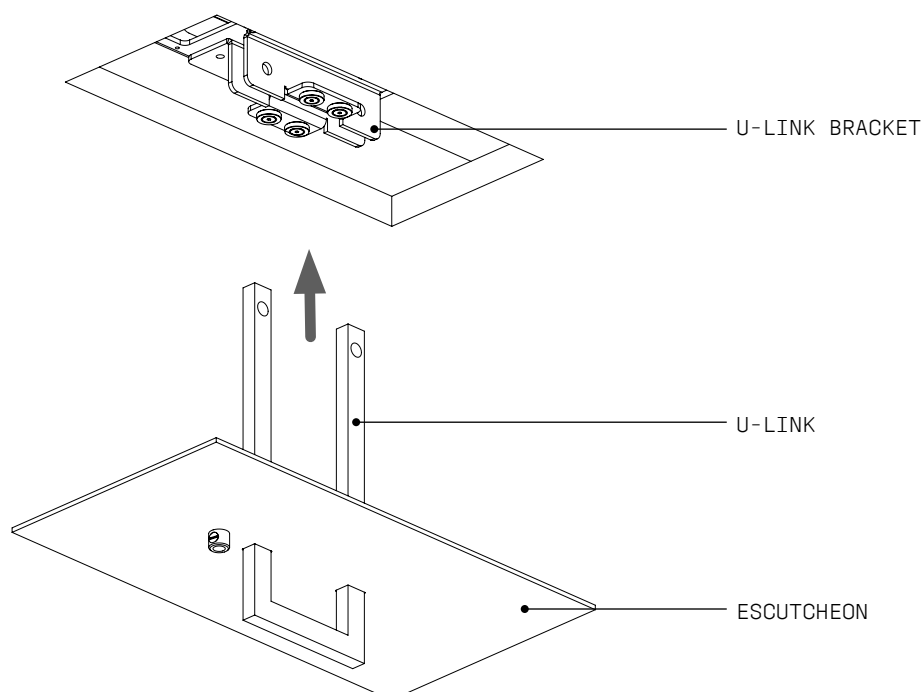
6 Remove the M10 NUTS and BOLTS from the U-LINK BRACKET.



7 Carefully raise the U-LINK through the ESCUTCHEON.

Raise the U-LINK and ESCUTCHEON assembly up to the U-LINK BRACKET carefully, ensuring the holes are aligned.

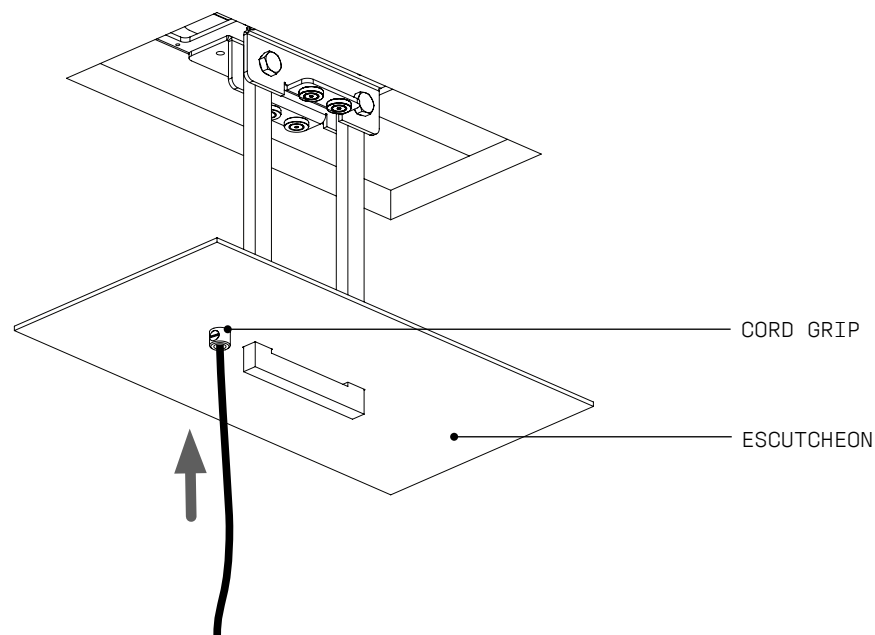
Attach and fasten the HEX BOLTS & NUTS, careful not to overtighten or deform the brackets.



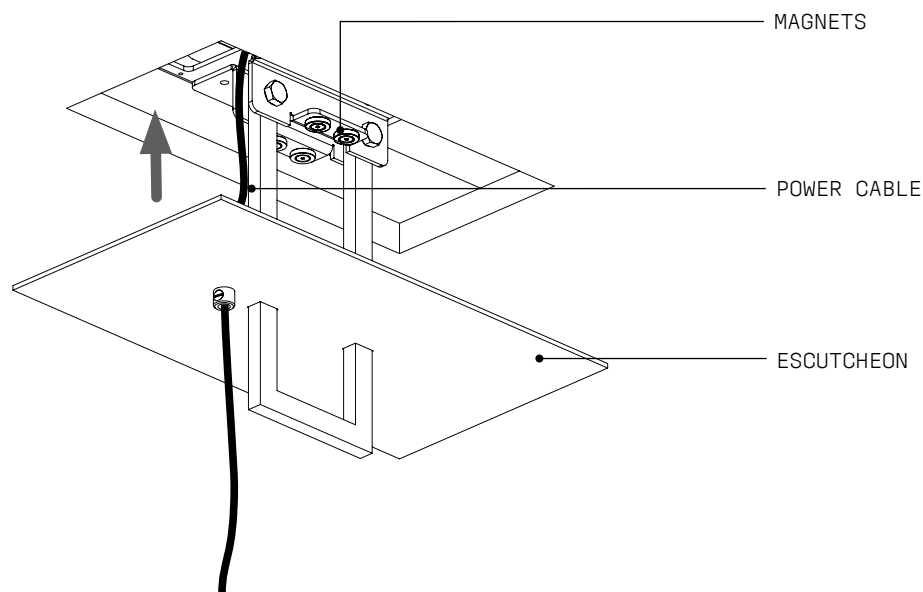
- 8 Pass the fixture cable through the CORD GRIP in the ESCUTCHEON and connect it to the PSM.  
— Refer to the supplied wiring diagram



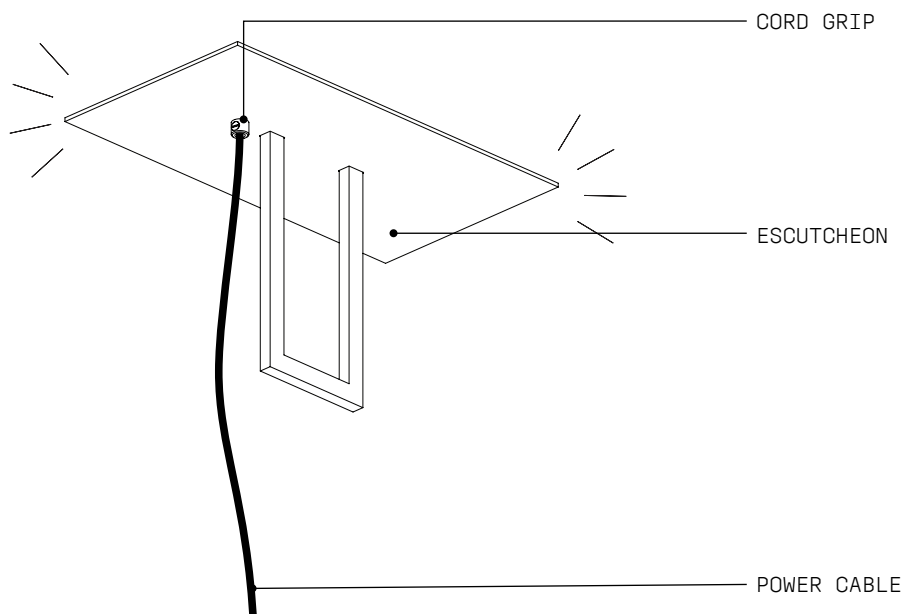
Trim any excess cable.



- 9 Carefully raise the ESCUTCHEON toward the PSM, until the MAGNETS engage, ensuring not to catch the POWER CABLE.



- 10 — With the ESCUTCHEON in place, ensure the CORD GRIP is adequately secured on to the POWER CABLE and make any necessary final adjustments to the PENDANT.



- 11 — Conduct a final visual assessment of both the canopy and fixture to ensure all parts have been properly fitted and secured. Once satisfied that everything is in working order, remove all remaining protective material which will complete the installation process.

FINISH