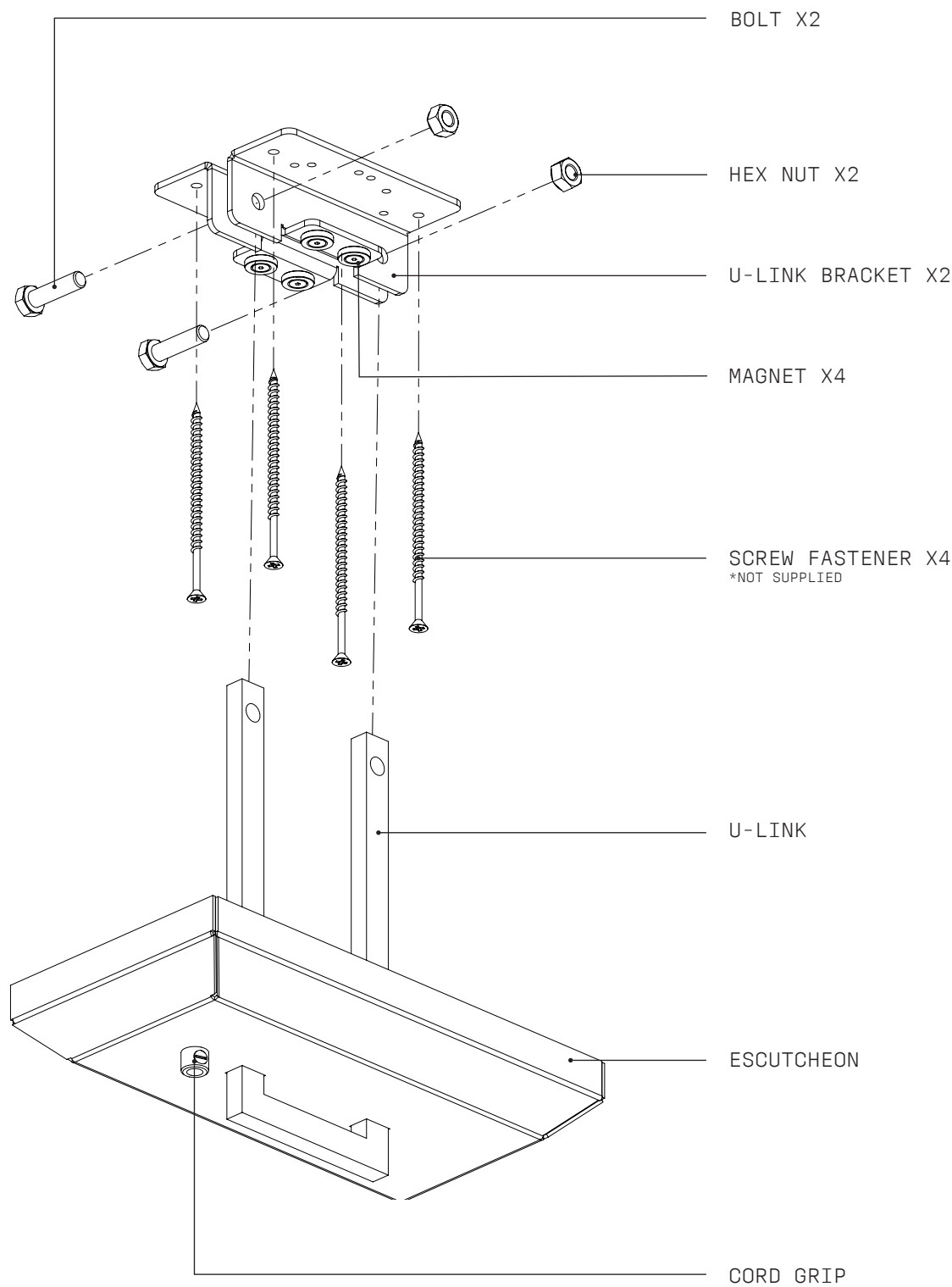


# CHAIN SURFACE CANOPY





## **WARNING: SHOCK HAZARD**

May result in serious injury or death.  
ENSURE POWER IS OFF before commencing any work.



## **WARNING: ELECTRICAL**

ALL ELECTRICAL connections must be made by a qualified electrician in accordance with the regulations and codes governing the area for which the CHRISTOPHER BOOTS Fixture is intended to be installed in. Failure to do so may result in serious harm or damage to property and life, at the owner's liability and expense.

CHRISTOPHER BOOTS will not be held liable for any damage caused from installation.



## **WARNING: STRUCTURAL**

Ensure that the substrate is securely installed and is in accordance with local building regulations. Failure to do so may potentially result in serious harm or damage of property, at the owner's liability and expense.

CHRISTOPHER BOOTS will not be held liable for any damage caused from installation.



Refer to supplied WIRING DIAGRAM.

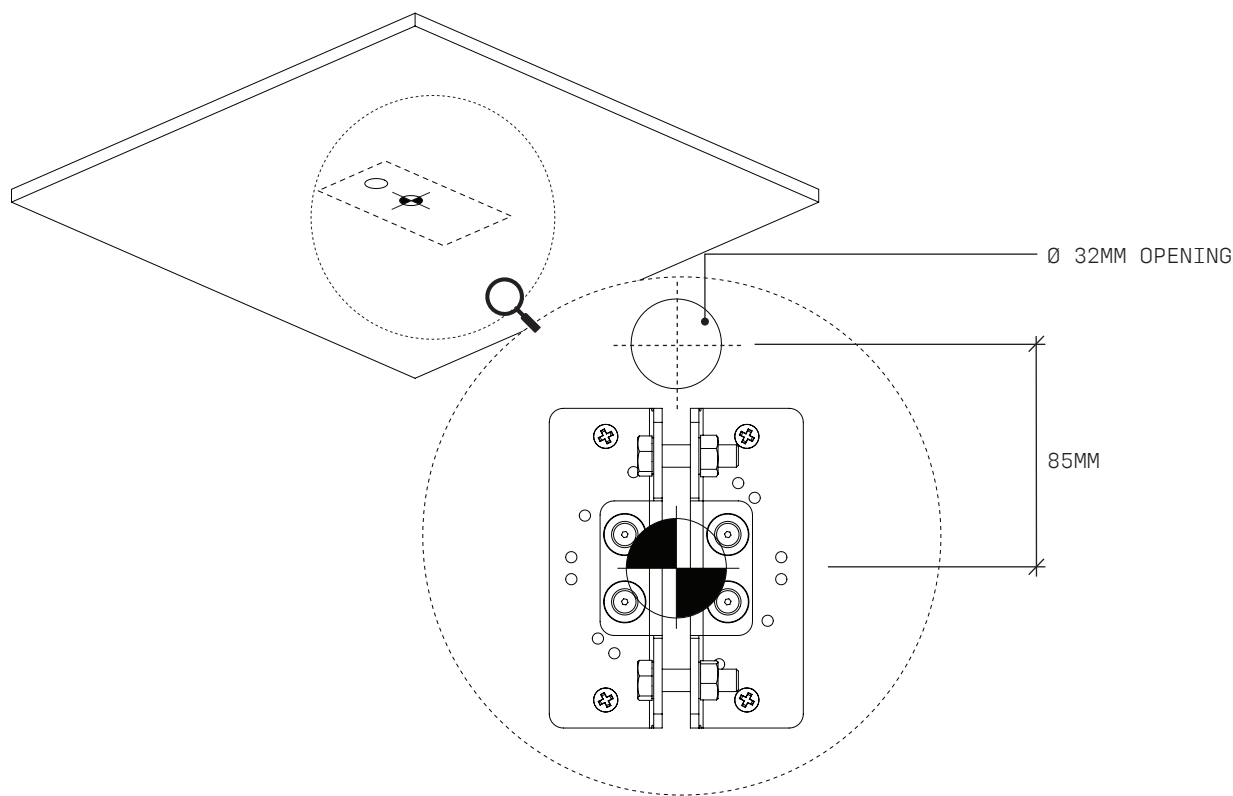
- 1
- Wearing gloves, unpack all the components for the CHAIN SURFACE CANOPY with care, ensuring not to scratch the surface of the ESCUTCHEON or the U-LINK.



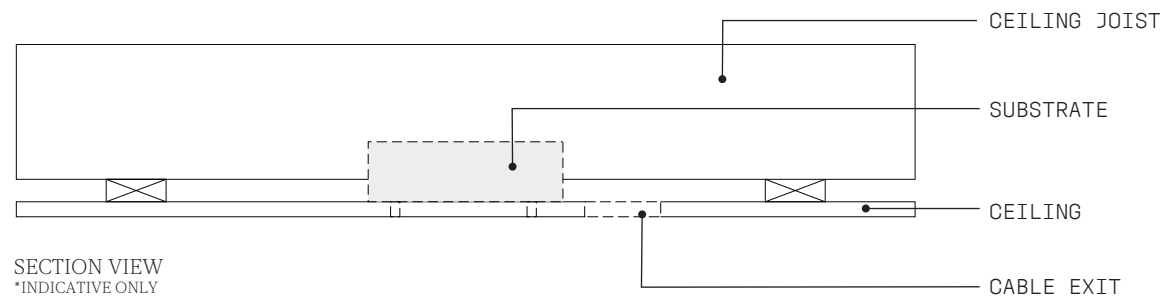
DO NOT REMOVE THE SCRATCH GUARD BEFORE COMPLETION.

- 2
- Use the template, on the last page of this document, to cut a Ø 32mm hole in the ceiling for the power cable, followed by x4 pilot holes.

The hole should be 85mm offset to the centre of the PSM.

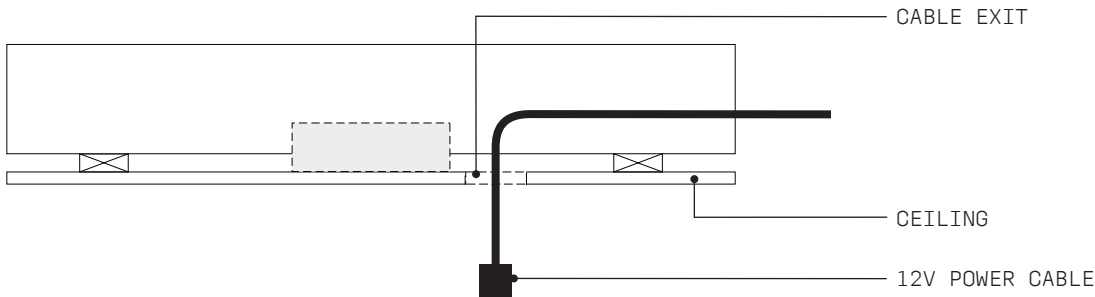


- 3
- Installer to provide adequate load-bearing substrate utilising ceiling joist where additional support is required.



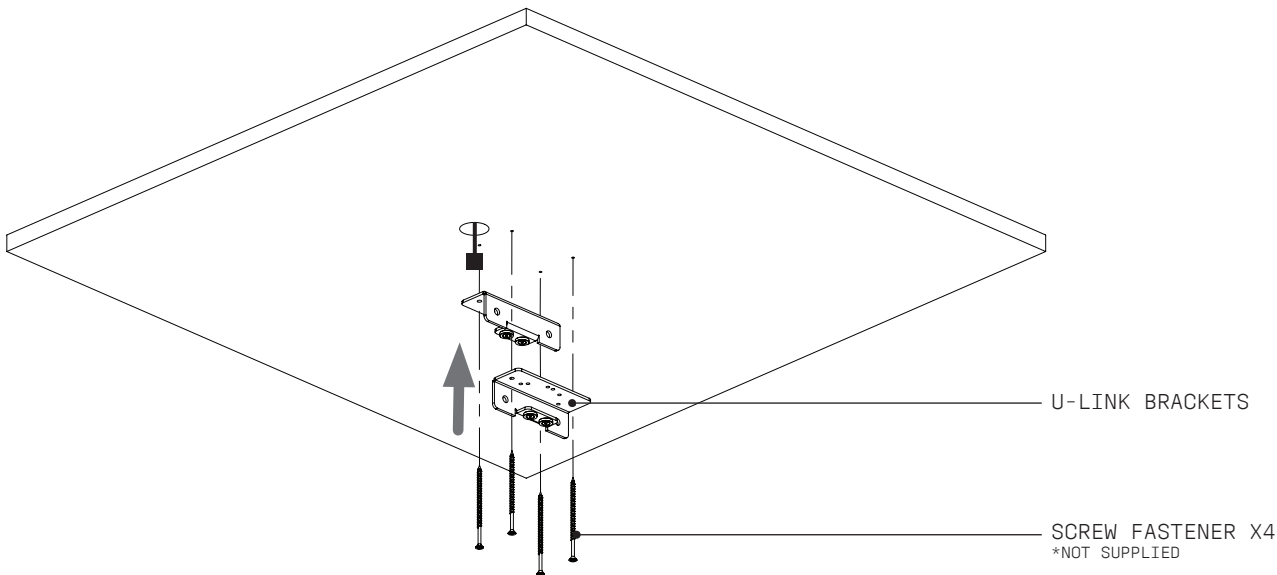
- 4
- Prepare the remotely located 12V Power Supply cable for connection to the pendant.

Refer to supplied WIRING DIAGRAM.



- 5
- Attach the U-LINK BRACKETS to the prepared Substrate via the pilot holes with appropriate SCREW FASTENERS.

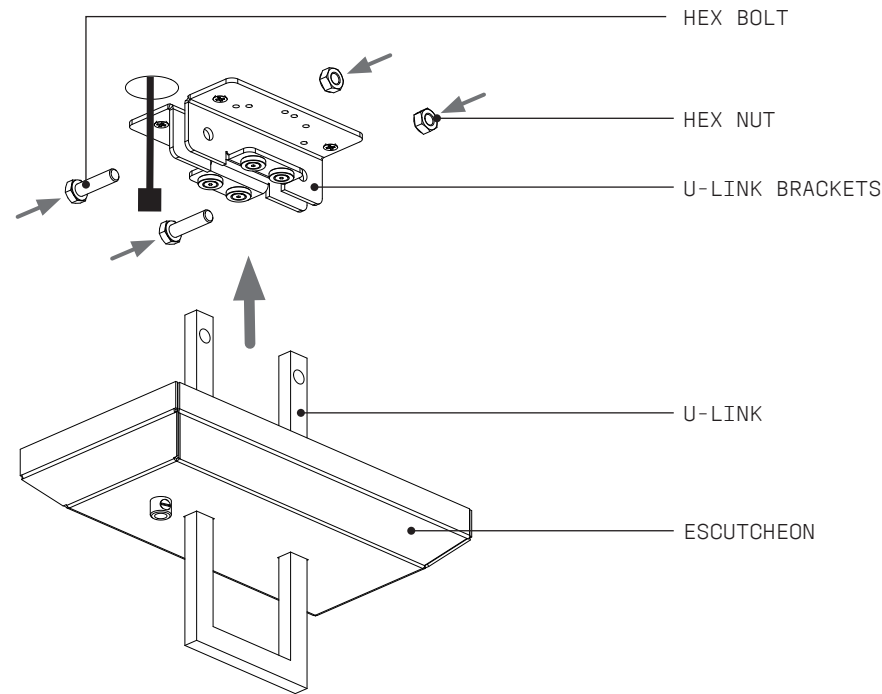
Ensure the correct holes on the U-LINK BRACKETS are used. Refer to the template.



6 Carefully raise the U-LINK through the ESCUTCHEON.

Raise the U-LINK and ESCUTCHEON assembly up to the U-LINK BRACKETS and carefully position in between the U-LINK BRACKETS, ensuring the holes are aligned.

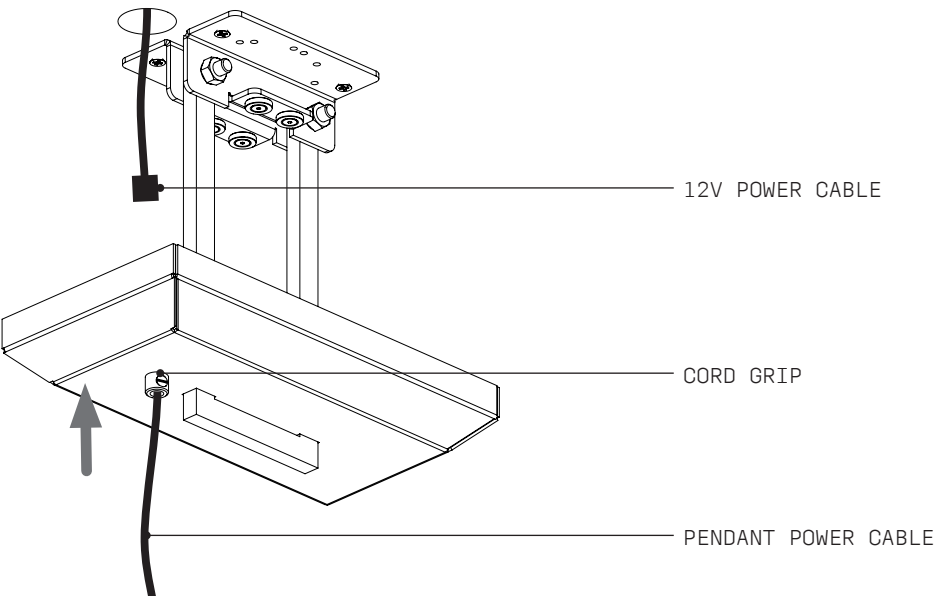
Attach and fasten the HEX BOLTS & NUTS, careful not to overtighten or deform the brackets.



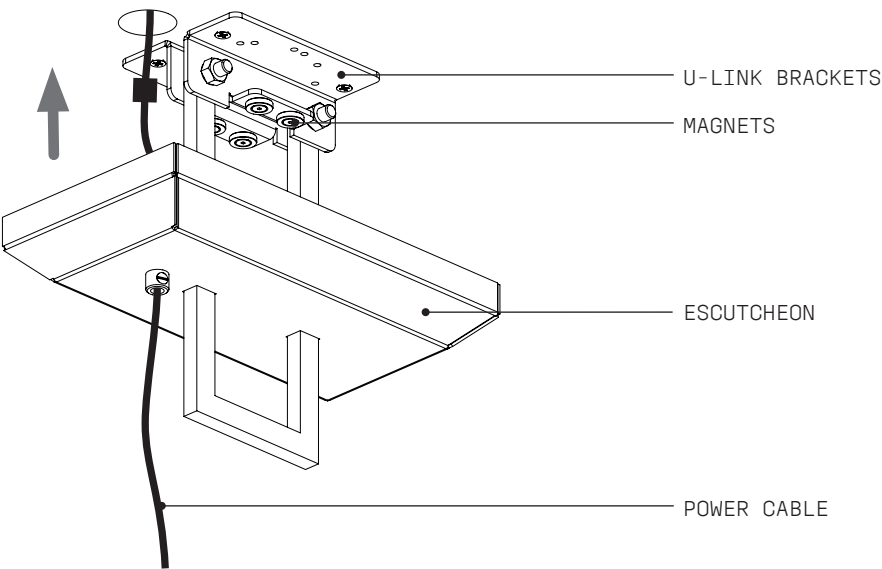
7 From the pendant, feed the POWER CABLE through the CORD GRIP as shown and connect to the prepared 12V POWER CABLE.

Refer to the wiring diagram.

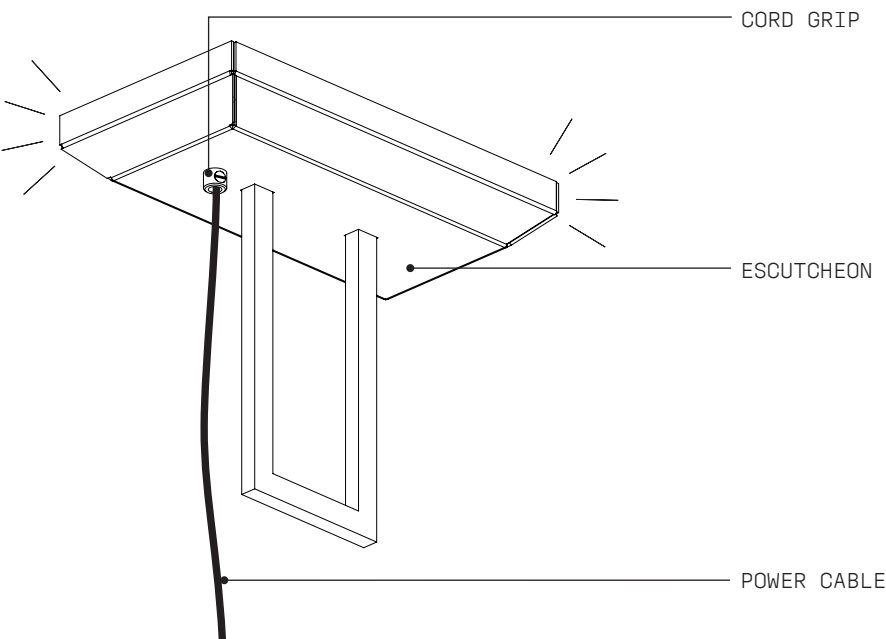
Trim any excess cable.



- 8 — Carefully raise the ESCUTCHEON toward the U-LINK BRACKETS, until the MAGNETS engage, ensuring not to catch the POWER CABLE.



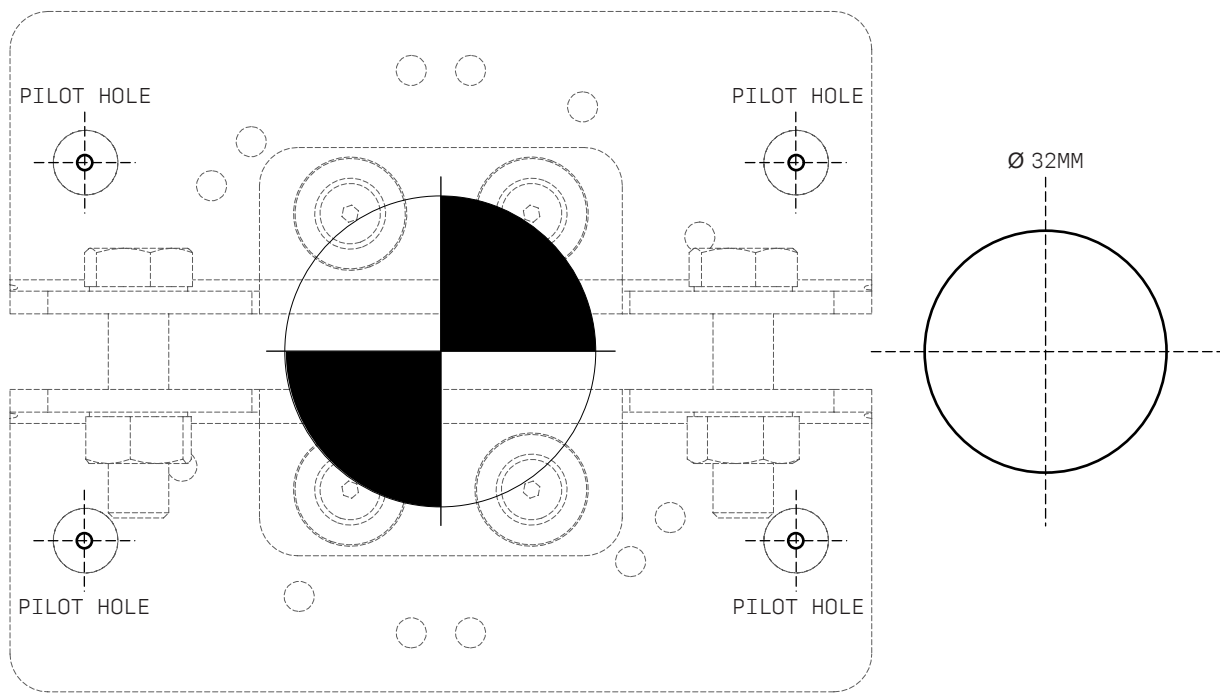
- 9 — With the ESCUTCHEON in place, ensure the CORD GRIP is adequately secured on to the POWER CABLE and make any necessary final adjustments to the PENDANT.



- 10
- Conduct a final visual assessment of both the canopy and fixture to ensure all parts have been properly fitted and secured. Once satisfied that everything is in working order, remove all remaining protective material which will complete the installation process.

FINISH

DRILLING TEMPLATE



MEASURE BEFORE CUTTING AS TEMPLATE MAY NOT BE TO SCALE

