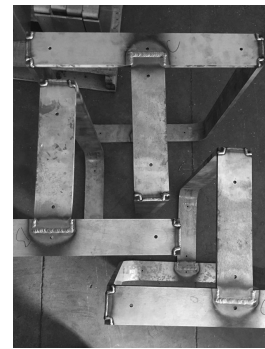


skram



piedmont pedestal table

P33



The piedmont pedestal table features solid timber construction with arcing edges and radiused corners. Client may specify edge profile as reverse bullnose, or wafer undercut. Spacious accommodation of 10+ persons at standard size. Pedestal bases are formed steel or bronze with timber detailing to match and adjustable leveler feet. All standard timber and metal finishes available. Contact skram for customization options. Residential use. For meeting and boardroom versions at a large scale and/or fully integrated connectivity and wire management options, please refer to contract version of this product for ordering details.

skram

P33

width 120 / 305cm

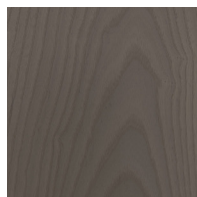
depth 42 / 107cm

height 29 / 74cm

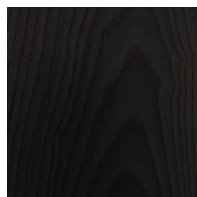
Timber



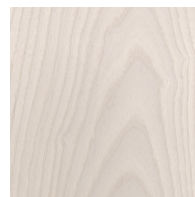
WA-N: White
Ash, Natural



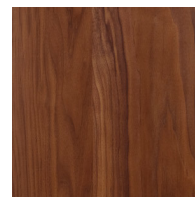
WA-G: White
Ash, Grey



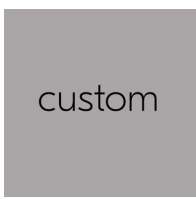
WA-E: White
Ash, Ebonized



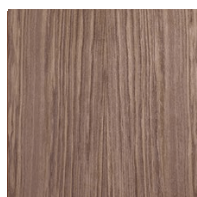
WA-WW: White
Ash,
Whitewashed



WAL: Walnut,
Natural



custom



Pale Walnut

Metal

Natural



SS4: Brushed
Stainless Steel



GML: Gunmetal



DRB: Dark
Rubbed Bronze



NRB: Natural
Rubbed Bronze

Metal

Matte Opaques



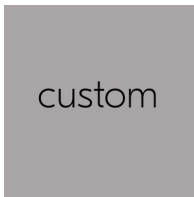
MOB: Matte
Opaque Black



MOC: Matte
Opaque
Charcoal



MOW: Matte
Opaque White



custom